

TATES

020 7602 6020



More Close, St Pauls Court, London W14 9BN

£465,000

- One bedroom
- Spacious reception room
- Loads of storage space
- Close to District and Piccadilly line, Circle and Hammersmith & City line tubes
- Energy Efficiency Rating Current Band: B
- Modern gated development
- Contemporary open plan kitchen
- Large communal garden
- Share of freehold

MORE CLOSE, W14

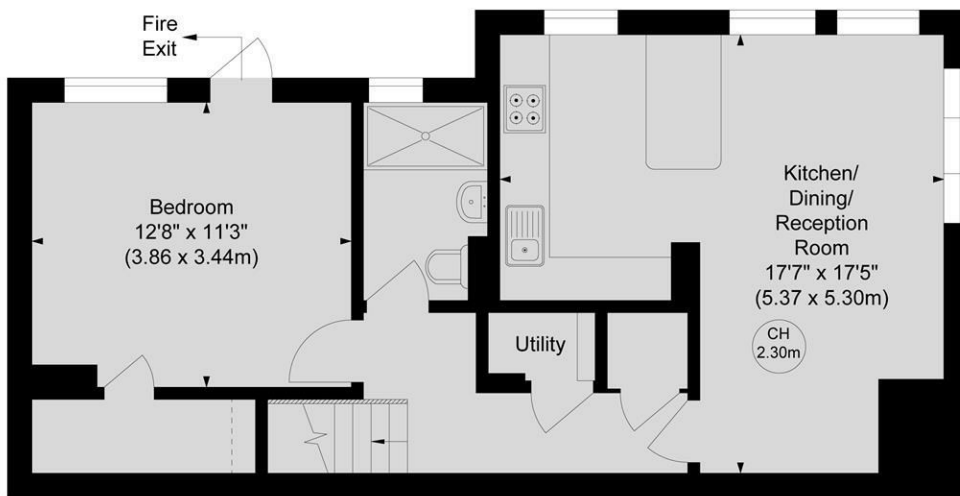
Approximate gross internal area

599 sq ft / 55.64 sq m

Key :
CH - Ceiling Height



THIRD FLOOR



SECOND FLOOR

Not to scale, for guidance only and must not be relied upon as a statement of fact.
All measurements and areas are approximate only

Whilst these particulars are produced in good faith and are believed to be correct, no guarantee is given, nor any responsibility accepted, by Tates nor by any of its representatives, for their accuracy. The particulars do not constitute part of any offer or contract, and it is recommended that such things as measurements, condition, structure, services, appliances, fixtures and fittings and facilities are all independently assessed by the prospective purchaser or renter of the subject property prior to committing to any contract.

Energy Efficiency Rating		
	Current	Potential
Very energy efficient - lower running costs		
(92 plus) A		
(81-91) B	81	81
(69-80) C		
(55-68) D		
(39-54) E		
(21-38) F		
(1-20) G		
Not energy efficient - higher running costs		
England & Wales	EU Directive 2002/91/EC	

135 Hammersmith Road, West Kensington, London W14 0QL

mail@tatesestates.co.uk

tatesestates.co.uk

Tates (Agents) Ltd. Registered in England and Wales No. 02356337
Registered Office: Imperial House, 8 Keane Street, London WC2B 4AS

